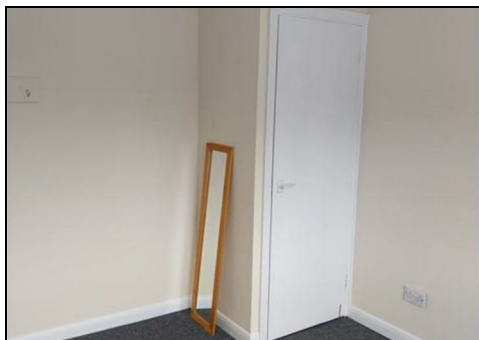




5 SANDYFORD CLOSE, BASFORD, NOTTINGHAM NG6 0GN
£995 PER MONTH

Unfurnished 3 bedroom semi-detached house newly carpeted and decorated throughout. Fitted kitchen with oven, new hob and extractor. Lounge leading to dining area with patio doors which lead to an enclosed rear garden. Two double bedrooms with master bedroom having built-in wardrobes, and one single bedroom. Family bathroom with new white 3 piece suite, electric shower over bath.

Ideal family house or suitable for professional couple. Off road parking with separate garage, UPVC double glazing and gas central heating. EPC Rating C



HALL

LOUNGE

DINING ROOM

KITCHEN

KITCHEN

KITCHEN

LANDING

BEDROOM 1

BEDROOM 1


BEDROOM 2

BEDROOM 2

BEDROOM 3

BATHROOM

GARDEN

Energy Efficiency Rating		
	Current	Potential
Very energy efficient - lower running costs		
(92 plus) A		
(81-91) B		
(69-80) C		
(55-68) D		
(39-54) E		
(21-38) F		
(1-20) G		
Not energy efficient - higher running costs		
England & Wales	EU Directive 2002/91/EC	

Environmental Impact (CO ₂) Rating		
	Current	Potential
Very environmentally friendly - lower CO ₂ emissions		
(92 plus) A		
(81-91) B		
(69-80) C		
(55-68) D		
(39-54) E		
(21-38) F		
(1-20) G		
Not environmentally friendly - higher CO ₂ emissions		
England & Wales	EU Directive 2002/91/EC	